

# RFID Labels and Tags

Maximize your RFID solutions



[www.ute.com](http://www.ute.com)



- Various applications
- Real-time visibility

## Maximize your RFID solutions

### RFID Labels and Tags

There are several elements to consider when selecting RFID labels and tags. However, the following 2 factors are the most important:

- Inlay size: the bigger RFID inlay provides you longer read distance.
- Material and environment: The material of the subject matter will also affect the selection of RFID label and tag, such as metal materials must use anti-metal label or tag. In addition, the labels or tags position and item stacking method will also affect the operating efficiency of the entire RFID solution.

Unitech provide RFID label & tags solutions for user's options.

The Unitech RFID Labels & Tags delivers a host of different features that evolves the service level for a variety of vertical applications such as cartons and pallets in warehousing solutions, RFID garment tags in clothing industry, food and beverage temperature control on goods transportation, asset tracking in manufacturing, blood samples tracking, and vaccine temperatures monitoring in healthcare.



## URP1000 P/N: 4090-900005G

### UHF RFID Printable Label

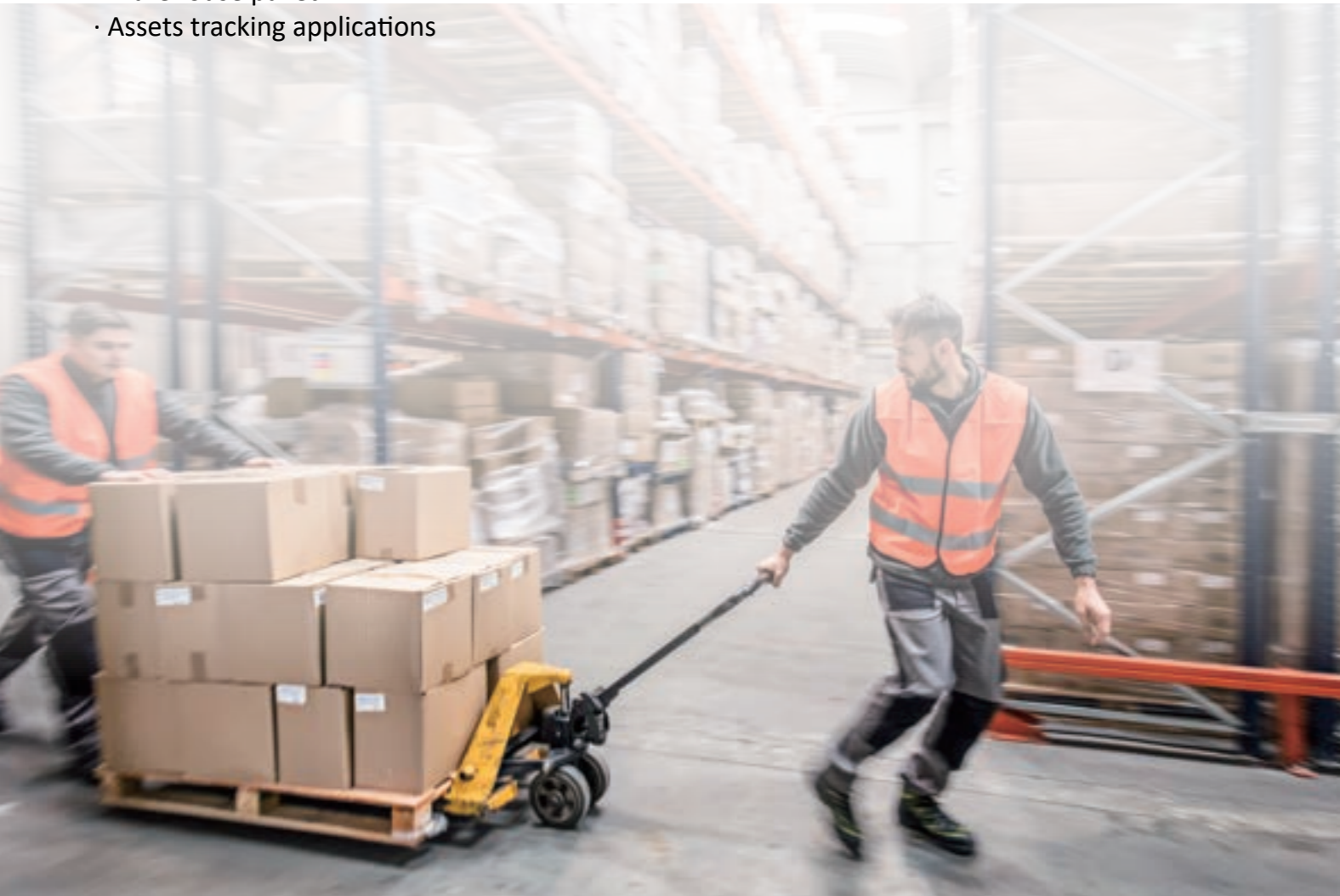


#### Feature

- Easy printable on the label by RFID printer (Zebra and TSC)
- Small size label : 50 \* 50 mm
- Compliant with international standards ISO 18000-6C
- Operates at a Frequency of 865 ~ 928 MHz
- Reprogrammable Memory is 496 bits (EPC), 128 bits (User)
- IC Type (chip) is Impinj Monza 4E
- Operating Temp : -40°C ~ 85°C
- QTY per box :100pcs

#### Applications

- Logistics involving carton packaging
- Warehouse pallet
- Assets tracking applications



## URP1010 P/N: 4090-900009G

### UHF RFID Printable Label



#### Feature

- Easy printable on the label by RFID printer (Zebra and TSC)
- Small size label : 60 \* 25 mm
- Compliant with international standards ISO 18000-6C
- Operates at a Frequency of 865 ~ 928 MHz
- Reprogrammable Memory is 96 bits (EPC)
- IC Type (chip) is Impinj Monza R6
- Operating Temp : -35°C ~ 85°C
- QTY per box :100pcs

#### Applications

- Metal objects



## URP1020 P/N: 4090-900013G

### UHF RFID Printable Label



#### Feature

- Easy printable on the label by RFID printer (Zebra and TSC)
- Small size label : 70 \* 20 mm
- Compliant with international standards ISO 18000-6C
- Operates at a Frequency of 865 ~ 928 MHz
- Reprogrammable Memory is 128 bits (EPC), 32 bits (User)
- IC Type (chip) is Impinj Monza R6-P
- Operating Temp : 0°C ~ 75°C
- QTY per box :100pcs

#### Applications

- Liquid items such as liquid packaging, blood plasma bags, infusion bags, chemical reagents, etc.

## URP1030 P/N: 4090-900012G

### UHF RFID Printable Label



#### Feature

- Passive (battery-free) sensor electronic tag that provides real-time temperature sensing
- Small size label : 98 \* 24 mm
- Compliant with international standards ISO 18000-6C
- Operates at a Frequency of 865 ~ 928 MHz
- Reprogrammable Memory is 192 bits (EPC), 512 bits (User)
- IC Type (chip) is NMV2D CAB0
- Operating Temp : -40°C ~ 85°C (+-0.5°C)
- QTY per box :100pcs

#### Applications

- Suitable for supply chain, Cold Chain Logistics and Temperature Control Containers etc.



## URT2000 UHF RFID Tag

P/N: 4090-900006G (865-868MHz)  
P/N: 4090-900007G (902-928MHz)



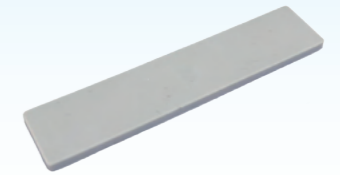
### Feature

- Anti-metal tag, could be pasted on metal tools for assets or production equipment management
- Tag can be torn off and be reuse
- UHF RFID label : 70 \* 20 \* 3.8 mm
- Compliant with international standards ISO 18000-6C
- Frequency of 865 ~ 868MHz / 902 ~ 928MHz
- Reprogrammable Memory is 96 bits (EPC), 512 bits (User)
- IC Type (chip) is Alien H3
- Operating Temp : -50°C ~ 85°C
- QTY in a box : 46pcs

### Applications

- Suitable for supply chain, Cold Chain Logistics and Temperature Control Containers etc.

## URT2010 P/N : 4090-900011G UHF RFID Tag



### Feature

- Washable tag, can be washed over 200 times
- Tag can be torn off and be reuse
- UHF RFID label : 56 \* 12 \* 1.8 mm
- Compliant with international standards ISO 18000-6C
- Frequency of 865 ~ 928MHz
- Reprogrammable Memory is 96 bits (EPC)
- IC Type (chip) is Impinj Monza 3
- Wet Clean : 85°C (Up to 60 mins )  
120°C (Up to 60 mins )  
200°C (Up to 30 secs )
- QTY in a box : 100pcs

### Applications

- Suitable for garment and special laundry (industrial grade laundry)



## URL3000 P/N: 4090-900008G UHF RFID Label

### Feature

- UHF RFID Label : 230 x 5 mm
- Compliant with international standards ISO 18000-6C
- Frequency of 865 ~928MHz
- Reprogrammable Memory is 496 bits (EPC), 128 bits (User)
- IC Type (chip) is Impinj Monza 4E
- Operating Temp. : -40°C ~ 85°C
- QTY in a box: 100 pcs



### Applications

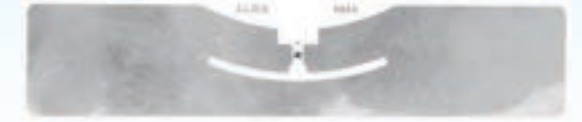
- Suitable for library management applications



## URL3010 P/N:4090-900015G UHF RFID Label

### Feature

- UHF RFID Label : 98 x 22 mm
- Compliant with international standards ISO 18000-6C
- Frequency of 865 ~928MHz
- Reprogrammable Memory is 480 bits (EPC), 512 bits (User)
- IC Type (chip) is Alien Higgs-3
- Operating Temp. : -40°C ~ 70°C
- QTY in a box: 100 pcs



### Applications

- Suitable for pasting on wood, plastic and glass materials



## HRT4000 P/N: 4090-900014G

### HF RFID Tag



#### Feature

- Made by Corrosion resistant stainless steel
- Meet the requirement of US Military Standard MIL-STD-810H
- HF RFID Tag : 50x 30 x 10 mm
- Compliant with international standards ISO 15693
- HF Frequency: 13.56MHz
- Reprogrammable Memory is 2000 bits (User)
- IC Type (chip) is Impinj Monza 4E
- IP68 Rating
- Operating Temp. : -30°C ~ 125°C
- Impact Protection Level : IK10
- QTY in a box: 50 pcs

#### Applications

- Suitable for third-party asset management applications to achieve product traceability, manufacturer authentication and digitized product information



For more information on unitech RFID UHF Antennas,  
please visit [www.ute.com](http://www.ute.com)



#### Headquarters

Taipei, Taiwan  
<http://www.ute.com> e-mail: [info@hq.ute.com](mailto:info@hq.ute.com)

#### unitech America

Los Angeles  
<http://us.ute.com> e-mail: [info@us.ute.com](mailto:info@us.ute.com)  
<http://can.ute.com> [info@can.ute.com](mailto:info@can.ute.com)  
Mexico  
<http://latin.ute.com> e-mail: [info@latin.ute.com](mailto:info@latin.ute.com)

#### unitech Asia Pacific & Middle East

Taipei  
<http://apac.ute.com> [info@apac.ute.com](mailto:info@apac.ute.com) / [info@india.ute.com](mailto:info@india.ute.com)  
<http://mideast.ute.com> [info@mideast.ute.com](mailto:info@mideast.ute.com)

#### unitech Europe

Tilburg / Netherlands  
<http://eu.ute.com> e-mail: [info@eu.ute.com](mailto:info@eu.ute.com)

#### unitech Japan

Tokyo  
<http://jp.ute.com> e-mail: [info@jp.ute.com](mailto:info@jp.ute.com)

#### unitech Greater China

Beijing, Shanghai, Guang Zhou, Xiamen  
<http://cn.ute.com> [info@cn.ute.com](mailto:info@cn.ute.com)  
Taipei <http://tw.ute.com> [info@tw.ute.com](mailto:info@tw.ute.com)

